

Have you seen?

See the two other 'Breeze up to the Downs' leaflets about how to get to Stanmer Park and Ditchling Beacon. See also our 'South Downs Bus Walks' leaflets. Download copies at www.brighton-hove.gov.uk/breezebuses



South Downs Walks App

Download the View Ranger App for free on your phone from your app store, or visit southdowns.gov.uk/viewranger on your computer or tablet. Then register and search for the South Downs National Park, to view the entire South Downs walk and ride routes, trail guidebook, and navigator.



Special Offer for bus passengers

WildFlour Café at Saddlescombe

Open Tuesday to Sunday from 10am - 5pm. Just over a mile /30 mins walk, east from Devil's Dyke along the South Downs Way. We serve a variety of hot and cold drinks, home-baked cakes, cream teas and savoury snacks and meals... all cooked on the premises. We also have a Facebook page, a website and are on TripAdvisor. Show a valid bus ticket or pass and get 10% off food and drink.

Just show your valid bus ticket or bus pass to take advantage of this offer!



Enquiries

Brighton & Hove Buses **01273 886200**
www.buses.co.uk
 traveline **0871 200 22 33** www.traveline.info/se
www.brighton-hove.gov.uk/breezebuses

Comments and complaints

All feedback is welcome and will help us improve the service!
 Email local.transport@brighton-hove.gov.uk
 or write to Public Transport, Brighton & Hove City Council, Hove Town Hall, Hove BN3 3BQ.

Large print?
01273 292480



National Trust



Brighton & Hove
 essential travel for our city

SOUTH DOWNS NATIONAL PARK

Printed on 100% post consumer recycled FSC certified paper.

6356 Brighton & Hove City Council Communications Team
 Illustrations: Jo Offer 07941 156308



breeze up to...



Devil's Dyke on the 77 bus

22 April 2018 to 15 September 2018

kids go free!

Train travellers' discount



Get fit...

Catch a 77 bus to Devil's Dyke and try one of these Linear Walks

Devil's Dyke to Poynings Cross Roads

(roundabout on the A281): 2 miles via hill paths & Poynings, returning to Brighton on Stagecoach or Sussex Coaches bus 17. Discovery Tickets may be the cheapest option: see 'Fares' section of this leaflet. Other Brighton & Hove bus tickets are not valid on the 17 bus. For times call **0871 200 22 33** or go to www.traveline.info/se

Devil's Dyke to Upper Beeding:

Follow the South Downs Way west for approx four miles to Beeding Hill then 3/4 mile north-west down the hill to the High Street in Upper Beeding. Then take the number 2 bus back to Brighton.

Devil's Dyke to Patcham:

Take the Sussex Border Path east and then south-east for approx three miles to Patcham. Catch a 5A bus from Old London Road to Churchill Square in Brighton.

The routes cross open downland, which is unsurfaced and bumpy and fairly steep in places. They can become muddy and slippery when wet, so take care! An average walker will cover about 1 mile in half an hour. Use Ordnance Survey Maps 122 (Explorer) or 198 (Landranger).



The mascot of the 77 bus, the skylark, is heard more than it is seen on the Downs. Its song fills the air as it ascends high into the sky.

The 77 bus will stop at all bus stops on its route.

Along Devil's Dyke Road, you can also hail the bus to stop anywhere that is safe for the driver to do so. This includes Dyke Approach, Brighton & Hove Golf Club and Hangleton Bridleway.

Relax! Let someone else do the driving, while you sit back, relax and enjoy the view.

Take in the views!

Why not sit on top and take in the superior views not normally visible from a car.

Car free and carefree... Take the bus to freedom! Freedom from traffic queues and parking hassles and the freedom to have a drink!



Calendar National Trust

Events at Devil's Dyke

For more information, activities, or to join our dedicated volunteer team, visit www.nationaltrust.org.uk/devils-dyke e-mail dyke.events@nationaltrust.org.uk or phone 01273 857712.

Devil's Dyke Wild Food walk, talk & picnic

• **Friday 20 July, 10.30am - 1.30 pm**

Spend a morning foraging and gaining deeper understanding of plants and their uses. Then enjoying the spectacular views whilst eating your packed lunch. Booking essential £5 per person.



Saddlescombe Farm

Just over a mile /30 mins walk, east from Devil's Dyke along the South Downs Way.

Open Day

• **Sunday 22 April, 10.30am - 4pm**
 Adult £7.50/
 child £3/ family £16

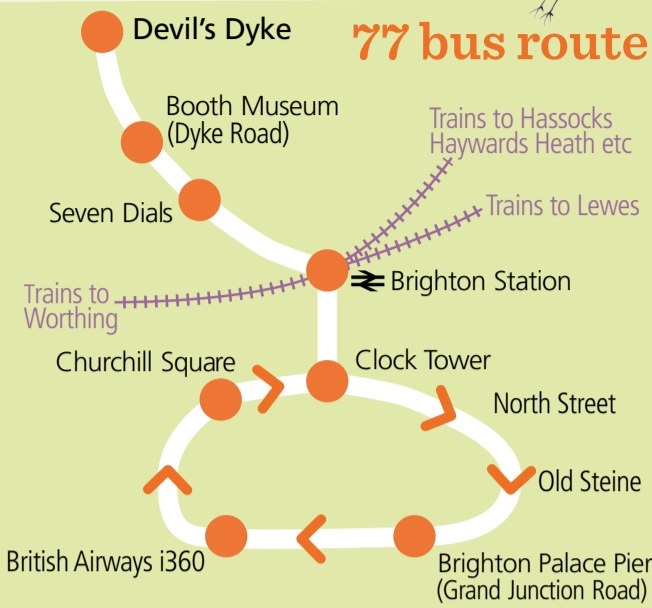
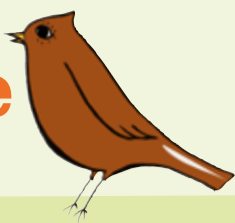
Heritage Open Day

• **Sunday 9 September, 10.30am - 3.30pm**
 FREE EVENT

Discover this ancient downland farm that was once owned by the Knights Templars. Tours of the 17th century buildings, the surrounding downs and the walled garden, displays & demonstrations, including freshly baked bread in the clay oven.



Timetable for the 77 bus



Fares (prices may change)



For full details of **SAVER** tickets please go to www.buses.co.uk/fares or phone 01273 886200.

National Bus Pass holders travel free.

Discovery Tickets offer a day's unlimited bus travel in Sussex, Surrey, Kent and East Hampshire. Issued and accepted by most bus companies: buy on board the first bus you catch! Family (5 people, max 2 adults) £17.50, Adult £9, Child £7.20. www.discoveryticket.co.uk

Rail tickets Show rail ticket(s) valid to Brighton or Hove and get two 77 bus tickets for the price of one, or a third off an individual ticket (except SAVER and Discovery).

Adults Brighton to Devil's Dyke £3 single, £5 Breeze Return (walkers can also use it to return from Ditchling Beacon or Stanmer Park!)

Children Up to two children (under 16) go free when travelling with an adult. BusID holders travel for £1 each way (except before 18.00 on school days). Other children (5 - 13 only) pay half fare.

NetworkSAVER issued and accepted throughout the route. **CitySAVER** is not valid for travel to Devil's Dyke.

77 bus Daily timetable - seven days a week! from 17 June until 31 August 2018 then Saturdays & Sundays only until 15 September

NB For buses before 17 June see Weekend timetable

*Evening buses only run from 17 June until 1 September

Brighton Palace Pier (stop N)	0945	1030	1115	1200	1245	1330	1415	1500	1545	1630	1715	1800	1900*	2000*
British Airways i360	0947	1032	1117	1202	1247	1332	1417	1502	1547	1632	1717	1802	1902*	2002*
Churchill Square (stop H)	0952	1037	1122	1207	1252	1337	1422	1507	1552	1637	1722	1807	1906*	2006*
Brighton Station (stop E) ⇌	0957	1042	1127	1212	1257	1342	1427	1512	1557	1642	1727	1812	1910*	2010*
Seven Dials, Dyke Road	1000	1045	1130	1215	1300	1345	1430	1515	1600	1645	1730	1815	1913*	2013*
Dyke Road, Woodruff Avenue	1006	1051	1136	1221	1306	1351	1436	1521	1606	1651	1736	1821	1919*	2019*
Dyke Road Ave, Tongdean Lane	1008	1053	1138	1223	1308	1353	1438	1523	1608	1653	1738	1823	1921*	2021*
Devil's Dyke Hotel	1016	1101	1146	1231	1316	1401	1446	1531	1616	1701	1746	1831	1929*	2029*
Devil's Dyke Hotel	1030	1115	1200	1245	1330	1415	1500	1545	1630	1715	1800	1845	1935*	2035*
Dyke Road Ave, Tongdean Lane	1038	1123	1208	1253	1338	1423	1508	1553	1638	1723	1808	1853	1942*	2042*
Dyke Road, Woodruff Avenue	1040	1125	1210	1255	1340	1425	1510	1555	1640	1725	1810	1855	1943*	2043*
Seven Dials, Buckingham Place	1050	1135	1220	1305	1350	1435	1520	1605	1650	1735	1820	1905	1948*	2048*
Brighton Station (stop D) ⇌	1052	1137	1222	1307	1352	1437	1522	1607	1652	1737	1822	1907	1950*	2050*
Clock Tower, Boots (stop N)	1055	1140	1225	1310	1355	1440	1525	1610	1655	1740	1825	1910	1953*	2053*
Brighton Palace Pier (stop N)	1101	1146	1231	1316	1401	1446	1531	1616	1701	1746	1829	1914	1957*	2057

Healthy days out are a Breeze

The Breeze bus routes are your ticket to fresh air and beautiful walks, in the glorious scenery of the stunning South Downs... they're your passport to a healthy day out (with a very low carbon footprint too!)



We apologise for any delays in the event of road works etc. Disruption will be kept to a minimum but details of any changes can be found at www.buses.co.uk or twitter.com/BrightonHoveBus or phone 01273 886200.



Taxi numbers (in case you miss the last bus!) are: 01273 747474, 01273 204060, 01273 414141, 01273 205205.

77 bus Weekend timetable - Saturdays, Sundays and Public Holidays only from 22 April until 16 June 2018

NB For buses after 16 June see timetable above

Brighton Palace Pier (stop N)	0900	1015	1130	1245	1400	1515	1630	1745
British Airways i360	0902	1017	1132	1247	1402	1517	1632	1747
Churchill Square (stop H)	0907	1022	1137	1252	1407	1522	1637	1752
Brighton Station (stop E) ⇌	0912	1027	1142	1257	1412	1527	1642	1757
Seven Dials, Dyke Road	0915	1030	1145	1300	1415	1530	1645	1800
Dyke Road, Woodruff Avenue	0921	1036	1151	1306	1421	1536	1651	1806
Dyke Road Avenue, Tongdean Lane	0923	1038	1153	1308	1423	1538	1653	1808
Devil's Dyke Hotel	0931	1046	1201	1316	1431	1546	1701	1816
Devil's Dyke Hotel	0937	1052	1207	1322	1437	1552	1707	1822
Dyke Road Avenue, Tongdean Lane	0945	1100	1215	1330	1445	1600	1715	1830
Dyke Road, Woodruff Avenue	0947	1102	1217	1332	1447	1602	1717	1832
Seven Dials, Buckingham Place	0957	1112	1227	1342	1457	1612	1727	1842
Brighton Station (stop D) ⇌	0959	1114	1229	1344	1459	1614	1729	1844
Clock Tower, Boots (stop N)	1002	1117	1232	1347	1502	1617	1732	1847
Brighton Palace Pier (stop N)	1008	1123	1238	1353	1508	1623	1738	1853

A scenic weekend walk from Ditchling Beacon to Devil's Dyke

Catch the weekend-only 79 bus to Ditchling Beacon. From the bus stop, walk west along the South Downs Way for about six miles to Devil's Dyke, via Saddlescombe: At the top of the Dyke, turn right along the road to the 77 bus stop (opposite the Devil's Dyke pub). For 79 bus times pick up the 'Breeze up to Ditchling Beacon' leaflet or visit www.buses.co.uk

Exploring Devil's Dyke

A range of leaflets about the area, and ideas for walks or activities, is available from the National Trust information point at Devil's Dyke or contact 01273 857712. www.nationaltrust.org.uk/devils-dyke

Visit Booth Museum of Natural History

free admission. On Dyke Road. Bus stop outside. Call 01273 292777 for opening times.

Find out about interesting sights along the route and facts about Devil's Dyke.

Download the Devil's Dyke Podcast at www.visitbrighton.com/things-to-do/walking-guides/podcasts or pick up the Route Guide leaflet while you're on the 77 bus.

Things you'd never see from a car!

The 77 bus is operated by Brighton & Hove Buses.

All buses are low floor and wheelchair accessible double deckers, with space for buggies. Most of route 77 is run commercially, but is part-funded by Brighton & Hove City Council and the National Trust. Together with the South Downs National Park Authority they form the 'Breeze up to the Downs Partnership', whose mission is to improve access by bus to popular downland destinations. For more information go to www.brighton-hove.gov.uk/breezebuses

The winter timetable will be published in September; buses every weekend all year!